



Re-Use Project Proposals

Team 3

Francesca Stoppani, Magdaléna Biščová, Gabriele Provenzano,
Aneta Filipová

Iceland - Culture & Environment

Deconstruction and merging of tradition and folklore



Bi-lateral Relationship between humans and the nature



*Unique natural environment:
landscape and weather*





Source: <https://guidetoiceland.is/history-culture/the-ultimate-guide-to-turf-houses-in-iceland>

Iceland - "SHELTER" Installation - Concept

Recycled materials: Driftwood
and steel

Crossroads for humans and
nature



Protective open space in a
walking/biking area

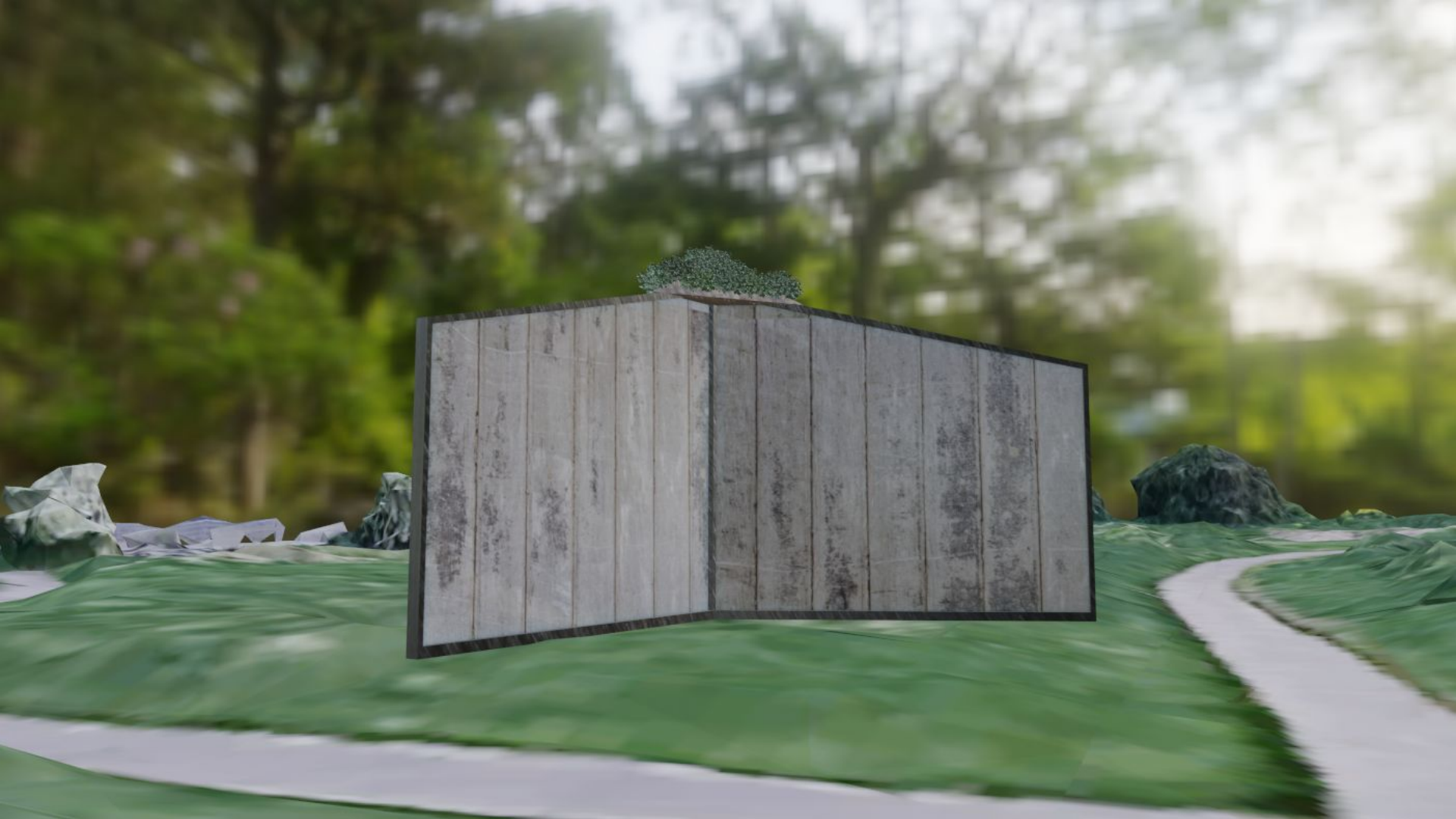
Shelter from the wind and
resting place

Grass roof inspired by
turf houses, nature is
towering





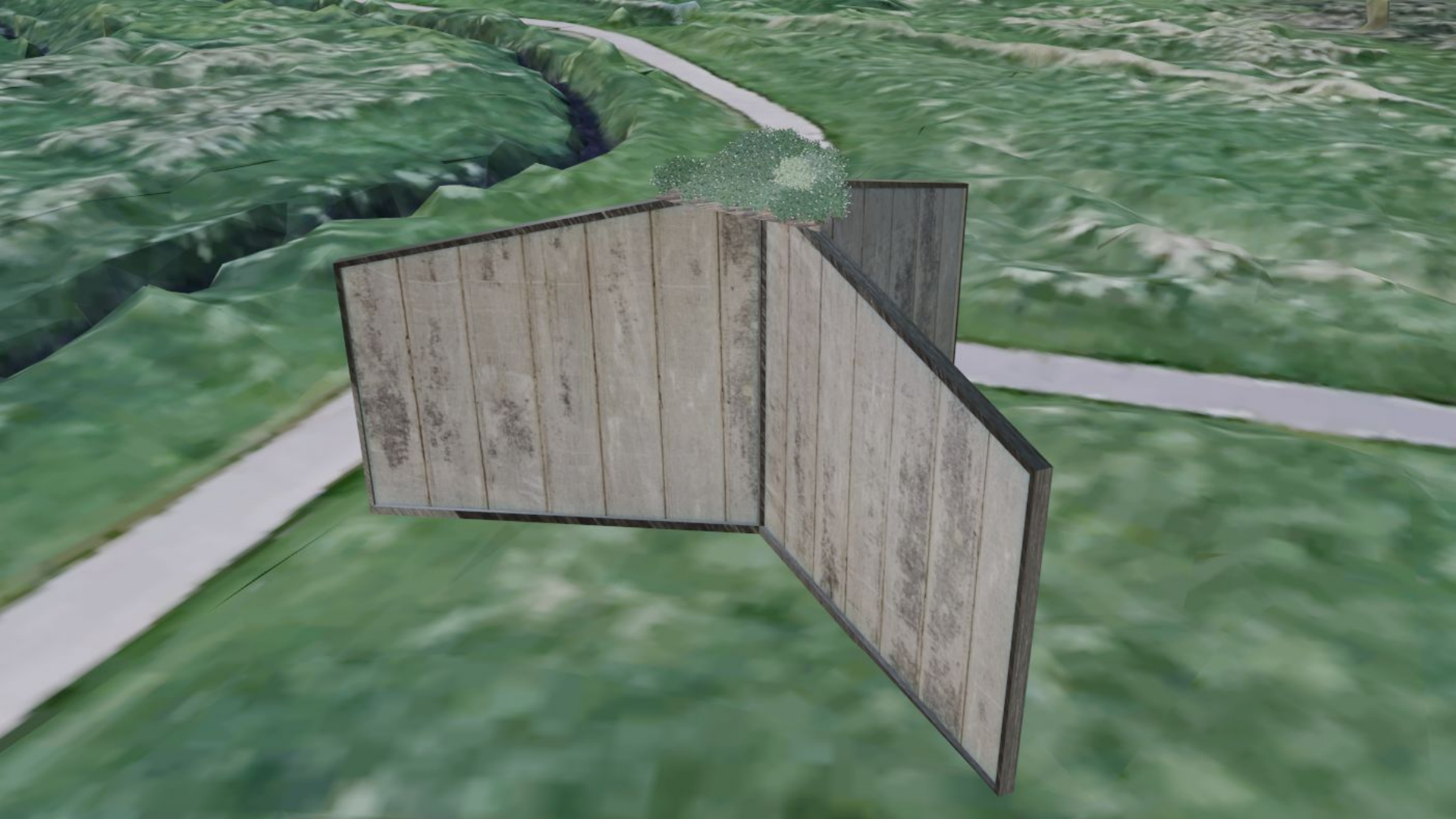


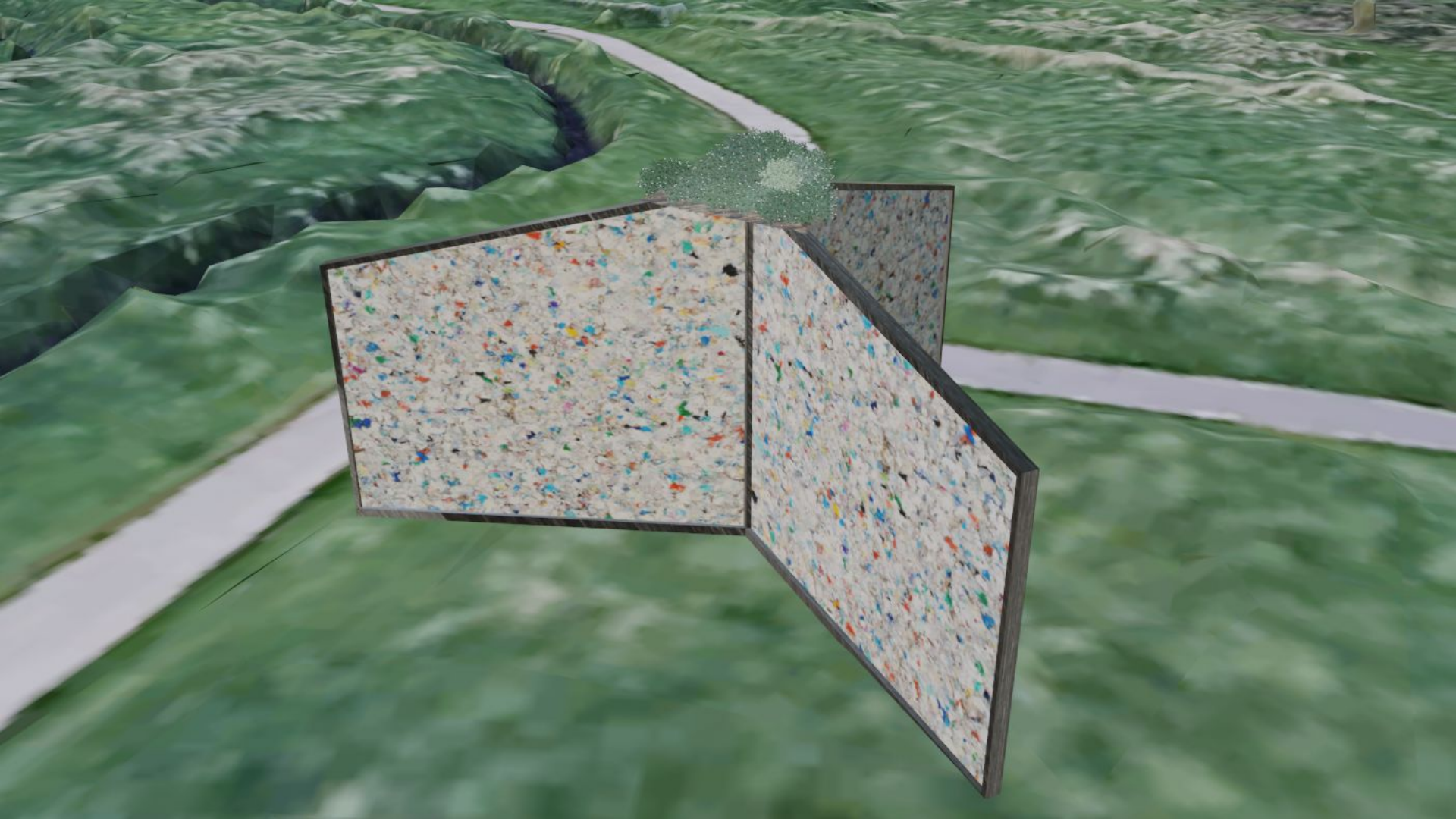












Iceland - "SHELTER" Installation - Practicalities



- Driftwood
- Reused steel
- Grass



- Height: $\pm 250\text{cm}$
- Panel Length: $\pm 280\text{cm}$



- Max 7000 EUR
- Driftwood:
<https://www.desertcart.i/s/brand/driftwood>
50pcs x 30EUR
- Reused Steel: 300 EUR (12m)
- Grass: 20EUR

Italy - Culture & Environment

Connection:
Historical and
contemporary



Identity of the city: rich
local culture, fragile
environment



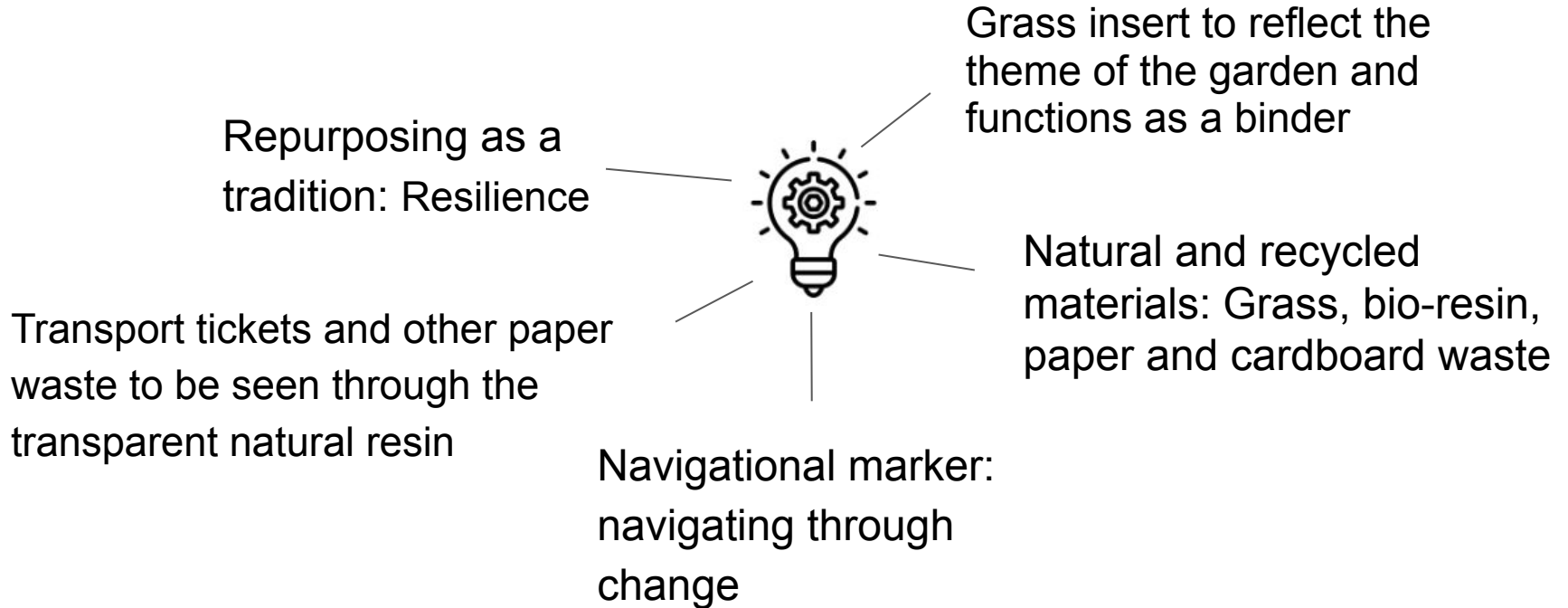
Garden: change, interdisciplinarity,
sustainability





Source: <https://bestveniceguides.it/2019/07/08/ma-nei-canali-di-venezia-si-tiene-la-destra/>

Italy- “BRICOLE” Installation - Concept





Bio-resin (Pece Greca)













Italy - “BRICOLE” Installation - Practicalities



- Bio-Resin
- Grass
- (Wood waste)



- Height:
±300cm
- Width: ± 170
cm



- Max 10.000 EUR
- Bio-Resin:
20kg/400EUR
- Grass: 20 EUR
- Cardboard/paper
waste: free

Czech Republic - Culture & Environment

Textile history: an important part of Ústí nad Orlicí's economy



Embracing the theme of circular economy in a globalised world

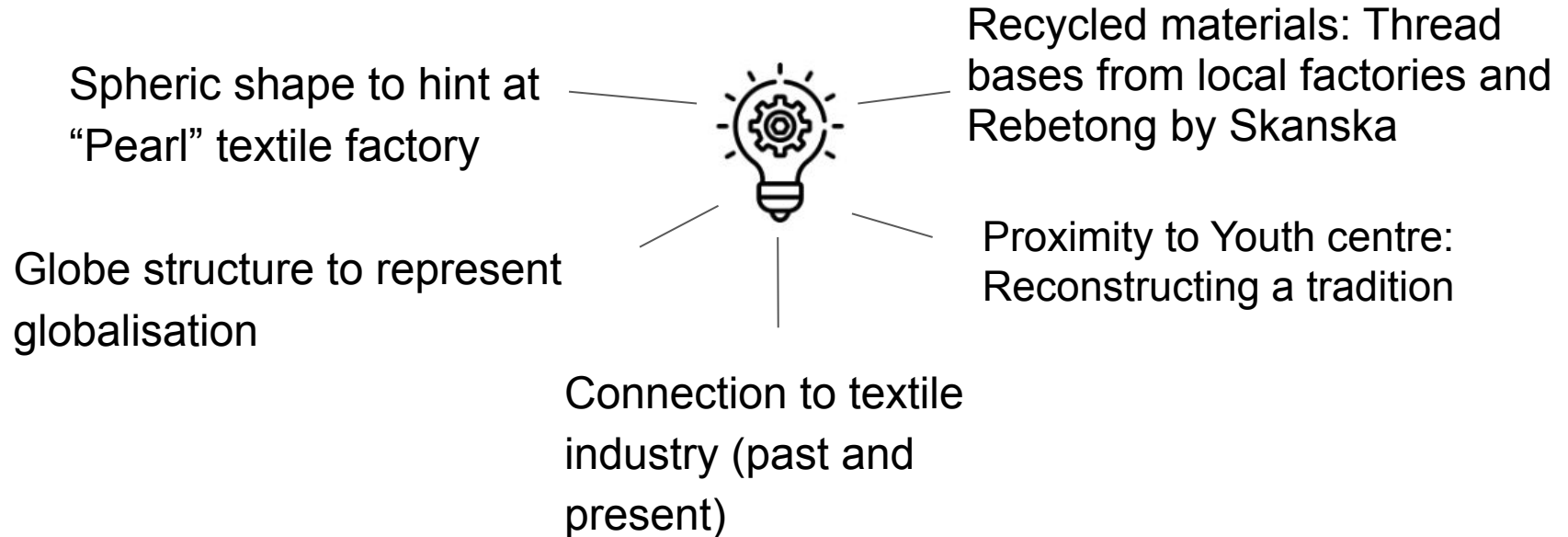


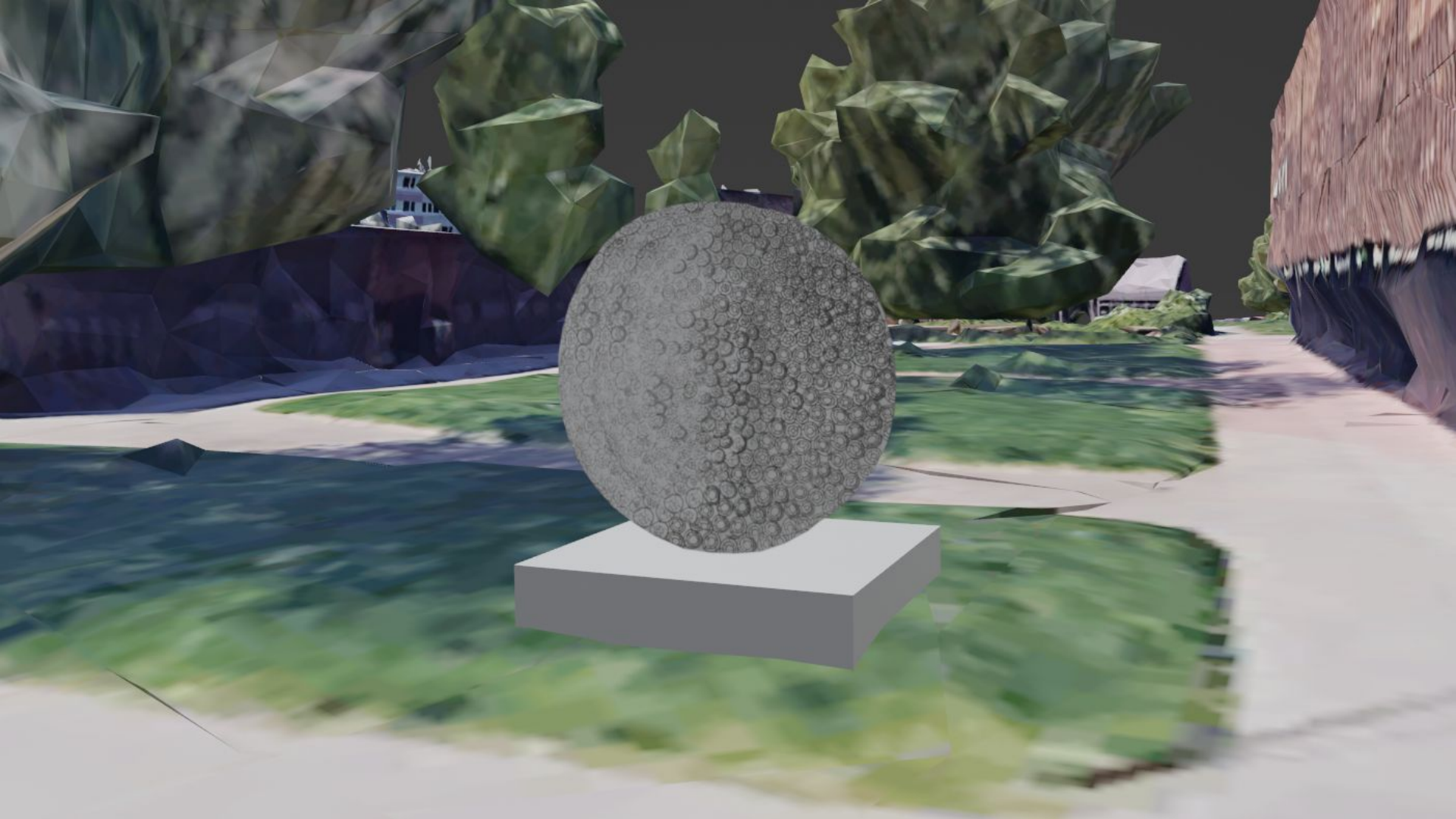
Proximity to Youth Centre





Czech Republic - "PEARL" Installation - Concept





Czech Republic - “PEARL” Installation - Practicalities



- Plastic rolls
- Bio-Resin
- Rebetong by Skanska
- Reused steel



- Diameter: 150 cm
- Square base: 200 cm per side



- Max 8000 EUR
- Plastic thread bases: free
- Rebetong: 1m³/107EUR
- Bio-Resin: 10kg/200EUR
- Reused steel

Thank you!

Questions? Let's talk!

